

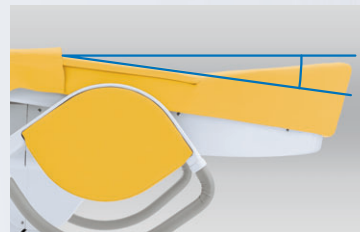
Equipped with accurate functions that can respond to emergencies

Transferring mother to stretcher



The side-fence and hand grip can be quickly stowed so that the delivery table and a stretcher can be placed side by side without obstruction.

Easy operation of head-down tilt



With reclining backrest function, mother can be placed in the head-down tilt position.

| L.D.R DELIVERY TABLE |

DG-820

OPTIONS

Strain grip above the head

DG-820-HG



Hand switch

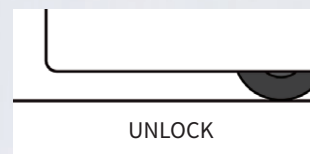
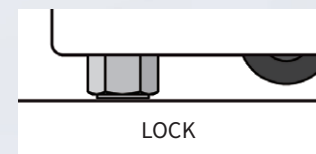
DG-820-HSW



Base lock unit

DG-820Y

Lock and release can be operated by electro-hydraulic system.



LEATHER COLOR SELECTION



CODE No:CN11
(LEMON YELLOW)



CODE No:CN13
(ROSE PINK)

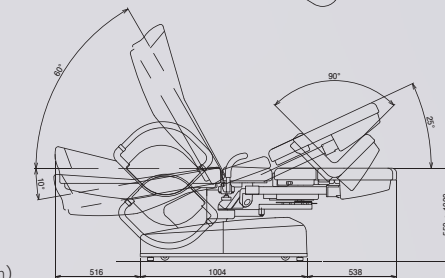
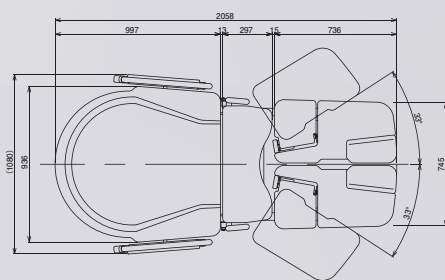


CODE No:AS1
(WINE RED)



CODE No:NH9
(NATURAL OAK)

DIMENSIONS & SPECIFICATIONS



(Unit:mm)

Bed Top Lifting	550~1000mm±10mm by Electro-hydraulic System
Pelvic Section Angle	0~25°±2° by Electro-hydraulic System (Synchronized Foot Support Lifting)
Back Support Raising Angle	-10°~60°±2° by Electro-hydraulic System
Foot Support Swing Angle	Right 0~33°±3° by Electric Motor Left 0~33°±3° by Electric Motor
Foot Support Bending Angle	0~90°±2° by Manual Gas Cylinder Control
Leg Holder Bending Angle	0~75°±2° by Manual Control
Side Fence Rotation Angle	180° by Manual Control
Support Board Sliding Stroke	150mm±3mm by Manual Control
Rotated Support Board Sliding Stroke	60mm±5mm by Manual Control
Support Board Rotation Angle	90°±3° by Manual Control
Rating	AC 100V/115V/220V/230V/240V
Net Weight	305kg



Belmont <https://medical.takarabelmont.co.jp/>

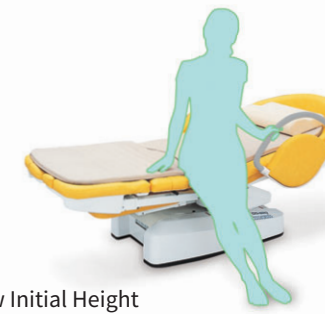


DG-820

Bearing the safety and comfort of expectant mothers always uppermost in mind, we actively worked to develop DG-820 that also helps to lighten the burden on the medical staff as well.



Gentle support for expectant mother



Low Initial Height

The lowest height of 55cm makes it easier for mother to get on and get off. The height can be freely adjusted as necessary on occasions of assistance and treatment.



Highly rated gel mat

Adoption of a three-tiered structure makes it possible to achieve even higher levels of comfortable heat retaining function and cushioning.

DG-820 assists both mother and maternity nurse to go through the labor period with a sense of assurance.

The position changes will ease pain of labor.



Swift conversion even by a single maternity nurse



Switch from the flat position to foot support by operation of a lever. Electrically driven foot support spreading function.

Frontal and Lateral assistance



The wide support board for receiving the newborn baby can be easily set simply by pulling it out from the under side of the table. Because it rotates, it also facilitates lateral assistance.

The 13 cm gap from the seat

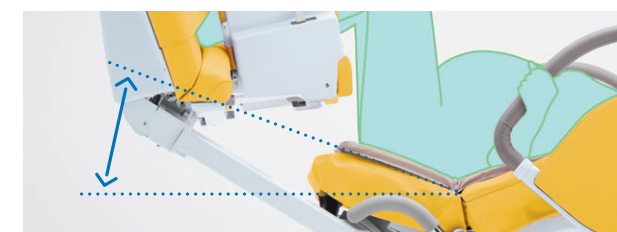


Designed to minimize the gap between the seat and the support board.

Delivery table for various labor and delivery positions

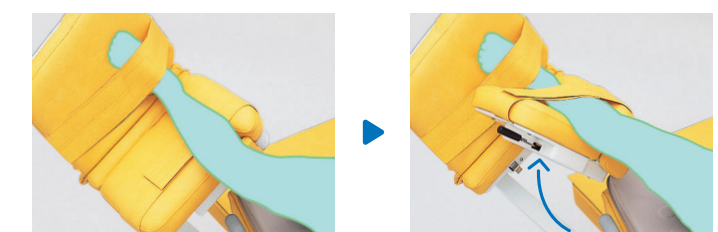


Separately controlled seat tilting up/tilting down function with angle adjustment



Seat tilting angle can be adjusted to suit the delivery situation.

The leg holder support to secure the lower limb



The support mechanism holds the calves from the outside, which alleviates the strain on the legs.